

VLE_x FAN HEATERS

VLE_x fan heaters are for fixed mounting (non-portable) and are ideal for use in hazardous area zone 1 & 2, where high performance of heating is needed.

The fan heater is made of materials able to withstand aggressive effects at sea, on offshore installations, in warehouses and for large manufacturing facilities. The fan provides an airflow/circulation and air heating for outdoor or indoor installation.

VLE_x comes in 3 sizes: S, M and L, in both 50 and 60 Hz. The 3 sizes are made for temperature class T₃ or T₄. If the fan is supplied with a connection piece for hose connection (Ø290 mm), select model "3R".

MATERIALS

- Cabinet and heater junction box: stainless steel AISI 316L
- d-enclosure: casted aluminium, epoxy coated RAL 7035 (light grey)
- Heating elements: stainless steel AISI 316L, bright annealed

STANDARDS AND APPROVALS

- | | |
|----------------------|-------------------------|
| • CE | • IEC/EN 61000-6-2:2005 |
| • EN 60335-1:2012 | • IEC/EN 61000-6-4:2007 |
| • EN 60335-2-30:2009 | • IEC/EN 60079-0 |
| • EN 60204-1:2006 | • IEC/EN 60079-1 |
| • EN 62233:2008 | • IEC/EN 60079-7 |
| • EN 50581:2012 | • IEC/EN 60079-11 |
| | • IEC/EN 60079-14 |

Our VLE_x - fan heaters can be approved by DNV, ABS and other 3. parties.

MARKING

ATEX & IECEx

- II 2G Ex db eb IIC T₃ Gb
- II 2G Ex db eb IIC T₄ Gb
- II 2G Ex db eb [ia] IIC T₃ Gb
- II 2G Ex db eb [ia] IIC T₄ Gb



TECHNICAL DATA

Voltage range:

- 3 x 380V, 3 x 400V, 3 x 440V, 3 x 480V and 3 x 690V

Degree of protection for fan motor:

- IP55

Degree of protection for d-enclosure and heater junction box (e-enclosure):

- IP66

Integrated safety components:

- TSHH, with manual outside reset to prevent overheating
- Overcurrent protection to prevent the motor to overheat

Ambient temperature:

- -25°C to +50°C

Cable glands:

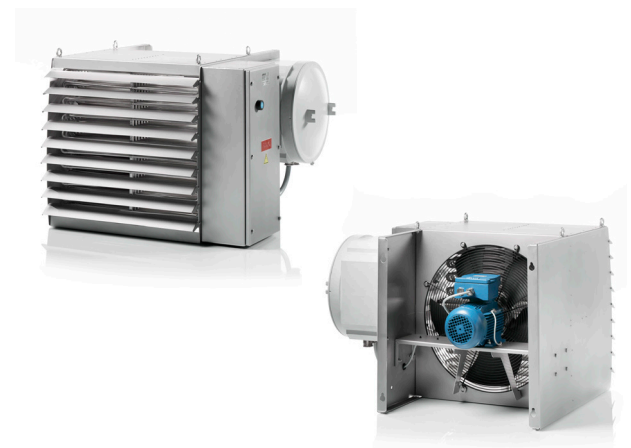
- Type: CMP
- Material: nickle plated brass
- See options on page 5

Lifting lugs:

Supplied with lifting lugs to ensure better working conditions during installation and maintenance

OPTIONS FOR VLE_x FAN HEATERS

In addition to our standard range shown on the following pages, optional extras are available. See the options on page 7.





STANDARD PROGRAMME - VLEx S / T₃

- Size: W780 x H500 x D755 mm
- Weight: 95-115 kg - depending on the selected optional equipment

Power	Item no. (50Hz)	Item no. (60Hz)	Voltage	Current (min. supply)	m ³ /h 50/60Hz	dB(A) 50/60Hz	ΔT 50/60Hz		
3,2 kW	21960201	21960202	3x380 V	6A	1550/1890	51/55	6/5°C		
3,5 kW	21960201	21960202	3x400 V	6A					
	21960203	21960204	3x440 V	6A					
	21960205	21960206	3x480 V	5A					
	21960207	21960208	3x690 V	4A					
6,4 kW	21960209	21960210	3x380 V	11A	2500/3500	56/61	7/5°C		
7 kW	21960209	21960210	3x400 V	11A					
	21960211	21960212	3x440 V	10A					
	21960213	21960214	3x480 V	9A					
	21960215	21960216	3x690 V	7A					8/6°C
9,6 kW	21960217	21960218	3x380 V	16A					11/8°C
10,6 kW	21960217	21960218	3x400 V	16A					12/8°C
	21960219	21960220	3x440 V	15A					
	21960221	21960222	3x480 V	14A					
	21960223	21960224	3x690 V	10A					

STANDARD PROGRAMME - VLEx M / T₃

- Size: W936 x H665 x D755 mm
- Weight: 115-135 kg - depending on the selected optional equipment

Power	Item no. (50Hz)	Item no. (60Hz)	Voltage	Current (min. supply)	m ³ /h 50/60Hz	dB(A) 50/60Hz	ΔT 50/60Hz		
10,6 kW	21960225	21960226	3x380 V	18A	3800/4600	60/64	8/6°C		
11,7 kW	21960225	21960226	3x400 V	18A					
	21960227	21960228	3x440 V	16A					
	21960229	21960230	3x480 V	15A					
	21960231	21960232	3x690 V	11A					
14,1 kW	21960233	21960234	3x380 V	24A					10/9°C
15,6 kW	21960233	21960234	3x400 V	24A					11/9°C
	21960235	21960236	3x440 V	21A					
	21960237	21960238	3x480 V	20A					
	21960239	21960240	3x690 V	14A					
17,6 kW	21960241	21960242	3x380 V	29A					13/11°C
19,5 kW	21960241	21960242	3x400 V	29A					14/12°C
	21960243	21960244	3x440 V	27A					
	21960245	21960246	3x480 V	24A					
	21960247	21960248	3x690 V	17A					

OCTOBER 2021



STANDARD PROGRAMME - VLEx L / T₃

- Size: W936 x H665 x D950 mm
- Weight: 130-155 kg - depending on the selected optional equipment

Power	Item no. (50Hz)	Item no. (60Hz)	Voltage	Current (min. supply)	m ³ /h 50/60Hz	dB(A) 50/60Hz	ΔT 50/60Hz
21,1 kW	21960249	21960250	3x380 V	35A	4800/6800	65/68	12/9°C
23,4 kW	21960249	21960250	3x400 V	35A			14/10°C
	21960251	21960252	3x440 V	32A			
	21960253	21960254	3x480 V	30A			
	21960255	21960256	3x690 V	21A			
24,6 kW	21960257	21960258	3x380 V	41A			14/10°C
27,3 kW	21960257	21960258	3x400 V	41A			16/11°C
	21960259	21960260	3x440 V	37A			
	21960261	21960262	3x480 V	34A			
	21960263	21960264	3x690 V	24A			
28,2 kW	21960265	21960266	3x380 V	47A			16/12°C
31,2 kW	21960265	21960266	3x400 V	47A			18/13°C
	21960267	21960268	3x440 V	42A			
	21960269	21960270	3x480 V	39A			
	21960271	21960272	3x690 V	27A			
31,7 kW	21960273	21960274	3x380 V	52A			18/13°C
35,1 kW	21960273	21960274	3x400 V	52A	20/14°C		
	21960275	21960276	3x440 V	48A			
	21960277	21960278	3x480 V	44A			
	21960279	21960280	3x690 V	30A			



STANDARD PROGRAMME - VLEx S / T₄

- Size: W780 x H500 x D755 mm
- Weight: 95-115 kg - depending on the selected optional equipment

Power	Item no. (50Hz)	Item no. (60Hz)	Voltage	Current (min. supply)	m ³ /h 50/60Hz	dB(A) 50/60Hz	ΔT 50/60Hz
2,7 kW	21960501	21960502	3x380 V	5A	1150/1890	51/55	5/4°C
3,0 kW	21960501	21960502	3x400 V	6A			
	21960503	21960504	3x440 V	5A			
	21960505	21960506	3x480 V	5A			
	21960507	21960508	3x690 V	4A			
6,0 kW	21960509	21960510	3x380 V	12A	2500/3500	55/61	7/5°C
6,7 kW	21960509	21960510	3x400 V	12A			
	21960511	21960512	3x440 V	11A			
	21960513	21960514	3x480 V	10A			
	21960515	21960516	3x690 V	7A			

STANDARD PROGRAMME - VLEx M / T₄

- Size: W936 x H665 x D755 mm
- Weight: 115-135 kg - depending on the selected optional equipment

Power	Item no. (50Hz)	Item no. (60Hz)	Voltage	Current (min. supply)	m ³ /h 50/60Hz	dB(A) 50/60Hz	ΔT 50/60Hz
8,9 kW	21960517	21960518	3x380 V	17A	3800/4600	60/64	6,5/5°C
9,9 kW	21960517	21960518	3x400 V	18A			
	21960519	21960520	3x440 V	16A			
	21960521	21960522	3x480 V	15A			
	21960523	21960524	3x690 V	11A			7,2/6°C

See standard programme for VLEx L / T₄ on next page



STANDARD PROGRAMME - VLEx L / T4

- Size: W936 x H665 x D950 mm
- Weight: 130-155 kg - depending on the selected optional equipment

Power	Item no. (50Hz)	Item no. (60Hz)	Voltage	Current (min. supply)	m ³ /h 50/60Hz	dB(A) 50/60Hz	ΔT 50/60Hz
11,9 kW	21960525	21960526	3x380 V	22A	4800/6800	65/68	7/5°C
13,2 kW	21960525	21960526	3x400 V	24A			8/5°C
	21960527	21960528	3x440 V	21A			
	21960529	21960530	3x480 V	20A			
16,0 kW	21960531	21960532	3x690 V	14A			9/7°C
	21960533	21960534	3x380 V	30A			
17,7 kW	21960533	21960534	3x400 V	31A			10/7°C
	21960535	21960536	3x440 V	29A			
	21960537	21960538	3x480 V	26A			
	21960539	21960540	3x690 V	18A			



STANDARD PROGRAMME - VLEx S / 3R T3

- Size: W780 x H500 x D1174 mm (Ø290 mm)
- Weight: 105-125 kg - depending on the selected optional equipment

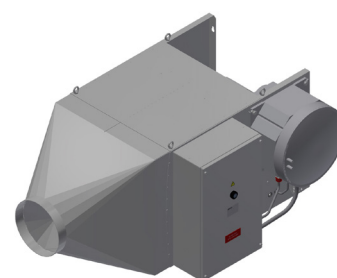
Power	Item no. (50Hz)	Item no. (60Hz)	Voltage	Current (min. supply)	m ³ /h 50/60Hz	dB(A) 50/60Hz	ΔT 50/60Hz
2,7 kW	21960601	21960602	3x380 V	5A	1550/1890	51/55	5/4°C
3,0 kW	21960601	21960602	3x400 V	6A			
	21960603	21960604	3x440 V	5A			
	21960605	21960606	3x480 V	5A			
	21960607	21960608	3x690 V	4A			
6,0 kW	21960609	21960610	3x380 V	12A	2500/3500	55/61	7/5°C
6,7 kW	21960609	21960610	3x400 V	12A			
	21960611	21960612	3x440 V	11A			
	21960613	21960614	3x480 V	10A			
	21960615	21960616	3x690 V	7A			

STANDARD PROGRAMME - VLEx M / 3R T3

- Size: W936 x H665 x D1276 mm (Ø290 mm)
- Weight: 130-150 kg - depending on the selected optional equipment

Power	Item no. (50Hz)	Item no. (60Hz)	Voltage	Current (min. supply)	m ³ /h 50/60Hz	dB(A) 50/60Hz	ΔT 50/60Hz
8,9 kW	21960617	21960618	3x380 V	17A	3800/4600	60/64	6,5/5°C
9,9 kW	21960617	21960618	3x400 V	18A			
	21960619	21960620	3x440 V	16A			
	21960621	21960622	3x480 V	15A			
	21960623	21960624	3x690 V	11A			7,2/6°C

See standard programme for VLEx L / 3R T3 på næste side



Model VLEx 3R T3



STANDARD PROGRAMME - VLEx L / 3R T3

- Size: W936 x H665 x D1546 mm (Ø290 mm)
- Weight: 145-170 kg - depending on the selected optional equipment

Power	Item no. (50Hz)	Item no. (60Hz)	Voltage	Current (min. supply)	m ³ /h 50/60Hz	dB(A) 50/60Hz	ΔT 50/60Hz
11,9 kW	21960625	21960626	3x380 V	22A	4800/6800	65/68	7/5°C
13,2 kW	21960625	21960626	3x400 V	24A			8/5°C
	21960627	21960628	3x440 V	21A			
	21960629	21960630	3x480 V	20A			
	21960631	21960632	3x690 V	14A			
16,0 kW	21960633	21960634	3x380 V	30A			9/7°C
17,7 kW	21960633	21960634	3x400 V	31A			
	21960635	21960636	3x440 V	29A			
	21960637	21960638	3x480 V	26A			
	21960639	21960640	3x690 V	18A			10/7°C

OPTIONS FOR VLEx FAN HEATERS

Item no.	Description
19400555	Flow switch, separate d-enclosure
19400551	TSH - safety thermostat with automatic reset, build into e-enclosure
19400553	RTD (PT100 sensor and 4-20mA transmitter), build into e-enclosure
19400554	Room thermostat 0-40°C, build into e-enclosure
19400550	Room thermostat 0-40°C, build into d-enclosure. Ensuring optimum operation and minimising energy consumption
19400552	Room thermostat 0-40°C, for mounting on wall. Ensuring optimum operation and minimising energy consumption
03020370	Cable for connection between thermostat and e-enclosure. Size 4x1,5 mm ² Ø10,6 mm. Available in full meters
14060049	Main switch, max 25A. Cable diameter Ø9-21 mm
14060050	Main switch, max 40A. Cable diameter Ø12-28 mm
14060051	Main switch, max 80A. Cable diameter Ø16-35 mm
03030141	Connecting cable between main switch and fan heater for max 25A. Size 4x6 mm ² Ø19,5 mm. Available in full meters
03030143	Connecting cable between main switch and fan heater for max 63A. Size 4x16 mm ² Ø25,5 mm. Available in full meters
19400568	Cable gland nickle plated brass M32 + M25 + M20 for cable Ø6,5-26,3 mm
19400569	Cable gland nickle plated brass M32 for cable Ø17,0-26,3 mm
19400563	Cable gland nickle plated brass M25 for cable Ø11,1-Ø20 (incl. reducer)
19400564	Cable gland nickle plated brass M20 for cable Ø6,5-Ø14 (incl. reducer)