



## FINNED TUBE HEATERS - WD-H / GG-H

Our finned tube heaters are designed for industrial applications. Because of their high level of reliability, they are especially suitable for all heating applications at an ambient temperature of up to 60°C. Due to the fact that their construction is in accordance with IP65, they are also suitable for damp areas. The heaters must be installed by skilled personnel. Because of the high surface temperature, they are not suitable for rooms containing inflammable materials and in areas with a possible risk of explosion.

The heater is composed of ceramic centre formers, in which a glow spiral is encased in a 1- or 3-phase construction.

The connection is robust and can sustain high temperatures. It is possible to insert a second cable gland into the connection box, this will allow for the connection with a room thermostat. A room thermostat (IP22; 0-30°C) may also be placed on the lid of the connection box (in a dry environment).

### CONSTRUCTION

The finned-tube air heaters consist of a 42-mm-diameter round steel tube, with rolled-in steel fins. The rolling-in process ensures the best possible heat transfer by the fins to the environment.

The finned-tube heaters are IP65. The appliance meets the CE directives. Connection is by means of a plastic cable gland (PG16) with pull relief.

Finish WD-H: Grey epoxy-coating

Finish GG-H: Galvanized surface

### APPLICATION

For industrial use in drying rooms, engine rooms, pumping houses, elevator shafts, as protection from frost, etc.

As a high-level heater in heating coves, waiting rooms, workshops, service areas, etc. [out of hand's reach, EN 60335-2-30 (e.g. h=1.8 m)].

### MOUNTING

May only be mounted horizontally.

A minimum distance from the ceiling of 300 mm is required.

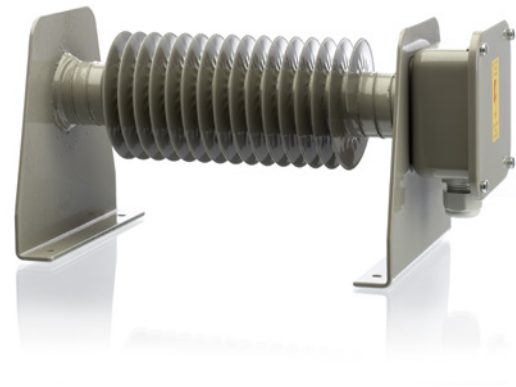
### STANDARD VOLTAGES

230 Volt AC 1-phase. Different voltages and outputs can be delivered upon request.

We can also deliver explosion-proof finned tube heaters.

### ACCESSORIES

Room thermostat 0-30°C, for installation on wall or heater box, IP22, 10A, 230V. Item no.: 19113117





## STANDARD PROGRAMME

Type	Item no.	Power	Voltage	Length (A)	Mounting (B)	Support-support (C)
WD-H 250	98301435	250W	230V	305mm	223mm	255mm
WD-H 500	98301443	500W	230V	555mm	473mm	500mm
WD-H 1000	98301450	1000W	230V	1055mm	973mm	1000mm
WD-H 1500	98301468	1500W	230V	1555mm	1473mm	1500mm
WD-H 2000	98301476	2000W	230V	2055mm	1973mm	2000mm
GG-H 250	98301484	250W	230V	305mm	223mm	255mm
GG-H 500	98301492	500W	230V	555mm	473mm	500mm
GG-H 1000	98301500	1000W	230V	1055mm	973mm	1000mm
GG-H 1500	98301518	1500W	230V	1555mm	1473mm	1500mm
GG-H 2000	98301526	2000W	230V	2055mm	1973mm	2000mm

WD-H = steel epoxy coated

GG-H = galvanized steel

